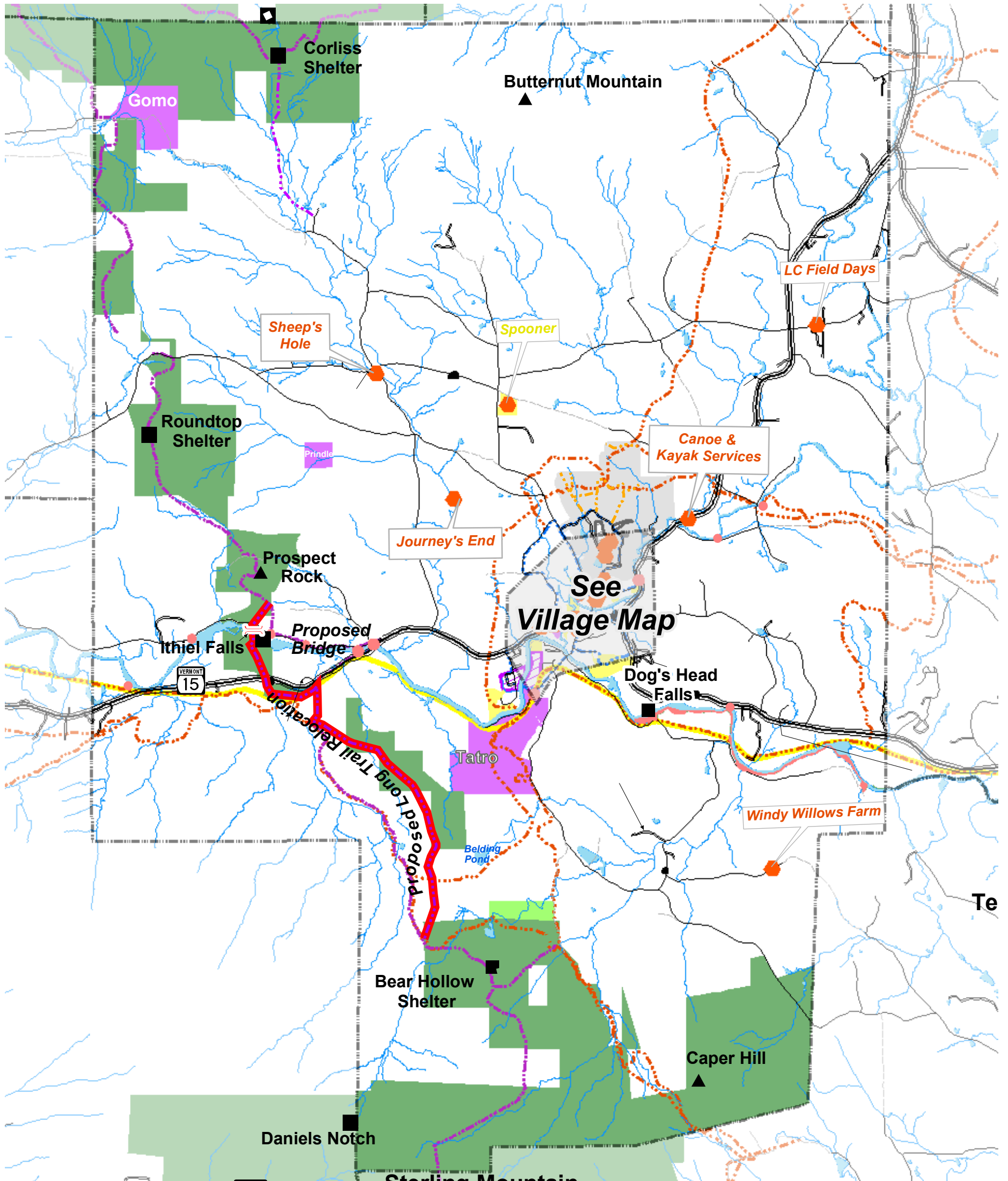
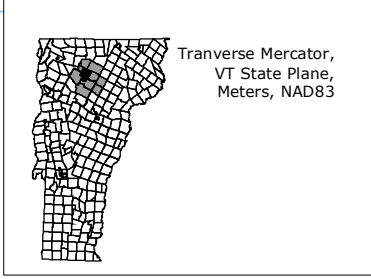


Johnson, Vermont Town Plan Town Recreation Resources



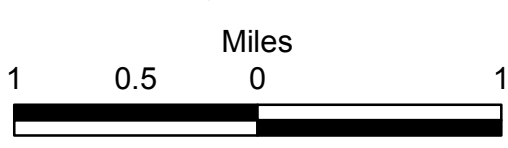
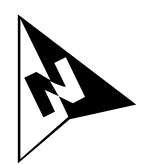
Cemetery	Proposed Rail Corridor	Road Class
Johnson State College	Long Trail	US/State Route
Town/Village Owned	VAST Trail	Class 2 Town Highway
Municipal Forest	Existing/Desired Walking Paths** <small>**As discussed in Johnson Pathways Plan</small>	Class 3 Town Highway
State Owned	Existing Sidewalk	Class 4 Town Highway
Public Access Area	Proposed Sidewalk	Private Road
Private Parcel with Informal Access for Hiking, Swimming and/or Fishing <small>**Check with Landowner**</small>	Riverwalk** <small>**As discussed in Johnson Pathways Plan</small>	Stream/River
	Johnson State College Trails	Pond/Lake



**Lamoille County
Planning Commission
GIS Service Center**

For planning purposes only.
Not for regulatory interpretation.

Karyl Fuller
LCPC
PO Box 1009
43 Portland Street
Morrisville, VT 05661-1009
802.888.4548 f 802.888.6938
kfuller.lcpc@pshift.com
www.lamoillecountyplanning.org
o:lg_drive/towns
Jo_proj/recmaps_Jo
June 5, 2005



POLITICAL BOUNDARIES: 1:24000 USGS Quadrangles, VCGI, 1991.
ROADS: 1:5000 E-911 Road Data, 2002.
SURFACE WATER: On-screen digitized from 1:5000 digital orthophotos using USGS 7 1/2' quadrangles and 1:20000 color infrared aerial photography as additional source material, VCGI for VHD-USGS, 2001.
TRAILS: ANR, 1993. VAST 2005.
PUBLIC LANDS: Generated by UVM Spatial Data Lab using various sources, 2002.
TOWN LANDS: 1:5,000 LCPC data, 2002.
WATER ACCESS AREAS: LCPC data, 1998.